

ELECTROVÁLVULAS

Solenoid valve

Électrovalve

Elettrovalvole

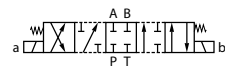
Electroválvula NG6 - corredera S1



Solenoid valve NG6 - spool S1

Electro-distributeurs NG6 - tiroir S1

Elettrovalvola NG6 - cursore S1



Referencia Part n°	TAMAÑO SIZE	VOLTAJE (V) VOLTAGE (V)	CAUDAL MÁX. (l/min) MAX. FLOW (l/min)	PRESIÓN MÁX. (bar) MAX. PRESSURE (bar)	€
DS3-S1/10N-A110-50K1	NG-6	110 VAC	60	350	253,53
DS3-S1/10N-A230-50K1	NG-6	230 VAC	60	350	253,53
DS3-S1/10N-A24-50K1	NG-6	24 VAC	60	350	253,53
DS3-S1/10N-A48-50K1	NG-6	48 VAC	60	350	281,58
DS3-S1/10N-D12K1	NG-6	12 VDC	60	350	253,49
DS3-S1/10N-D24K1	NG-6	24 VDC	60	350	253,49
DS3-S1/10N-D48K1	NG-6	48 VDC	60	350	281,58

Electroválvula NG6 - corredera S2



Solenoid valve NG6 - spool S2

Electro-distributeurs NG6 - tiroir S2

Elettrovalvola NG6 - cursore S2



Referencia Part n°	TAMAÑO SIZE	VOLTAJE (V) VOLTAGE (V)	CAUDAL MÁX. (l/min) MAX. FLOW (l/min)	PRESIÓN MÁX. (bar) MAX. PRESSURE (bar)	€
DS3-S2/10N-A110-50K1	NG-6	110 VAC	60	350	253,53
DS3-S2/10N-A230-50K1	NG-6	230 VAC	60	350	286,48
DS3-S2/10N-A24-50K1	NG-6	24 VAC	60	350	253,53
DS3-S2/10N-A48-50K1	NG-6	48 VAC	60	350	319,19
DS3-S2/10N-D12K1	NG-6	12 VDC	60	350	253,53
DS3-S2/10N-D24K1	NG-6	24 VDC	60	350	253,53
DS3-S2/10N-D48K1	NG-6	48 VDC	60	350	283,82

Electroválvula NG6 - corredera S3



Solenoid valve NG6 - spool S3

Electro-distributeurs NG6 - tiroir S3

Elettrovalvola NG6 - cursore S3



Referencia Part n°	TAMAÑO SIZE	VOLTAJE (V) VOLTAGE (V)	CAUDAL MÁX. (l/min) MAX. FLOW (l/min)	PRESIÓN MÁX. (bar) MAX. PRESSURE (bar)	€
DS3-S3/10N-A110-50K1	NG-6	110 VAC	60	350	253,53
DS3-S3/10N-A230-50K1	NG-6	230 VAC	60	350	253,49
DS3-S3/10N-A24-50K1	NG-6	24 VAC	60	350	253,53
DS3-S3/10N-A48-50K1	NG-6	48 VAC	60	350	281,54
DS3-S3/10N-D12K1	NG-6	12 VDC	60	350	253,53
DS3-S3/10N-D24K1	NG-6	24 VDC	60	350	253,49
DS3-S3/10N-D48K1	NG-6	48 VDC	60	350	281,58

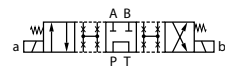
Electroválvula NG6 - corredera S4



NG6 Solenoid valve - spool S4

Electro-distributeurs NG6 - tiroir S4

Elettrovalvola NG6 - cursore S4



Referencia Part n°	TAMAÑO SIZE	VOLTAJE (V) VOLTAGE (V)	CAUDAL MÁX. (l/min) MAX. FLOW (l/min)	PRESIÓN MÁX. (bar) MAX. PRESSURE (bar)	€
DS3-S4/10N-A110-50K1	NG-6	110 VAC	40	350	282,70
DS3-S4/10N-A230-50K1	NG-6	230 VAC	40	350	282,70
DS3-S4/10N-A24-50K1	NG-6	24 VAC	40	350	282,70
DS3-S4/10N-A48-50K1	NG-6	48 VAC	40	350	366,75
DS3-S4/10N-D12K1	NG-6	12 VDC	40	350	282,70
DS3-S4/10N-D24K1	NG-6	24 VDC	40	350	282,62
DS3-S4/10N-D48K1	NG-6	48 VDC	40	350	311,87

ELECTROVÁLVULAS

Solenoid valve

Électrovalve

Elettrovalvole

Electroválvula NG6 - corredera S8



NG6 Solenoid valve- spool S8

Electro-distributeurs NG6 - tiroir S8

Elettrovalvola NG6 - cursore S8



Referencia Part n°	TAMAÑO SIZE	VOLTAJE (V) VOLTAGE (V)	CAUDAL MÁX. (l/min) MAX. FLOW (l/min)	PRESIÓN MÁX. (bar) MAX. PRESSURE (bar)	€
DS3-S8/10N-A110-50K1	NG-6	110 VAC	50	350	282,70
DS3-S8/10N-A230-50K1	NG-6	230 VAC	50	350	282,70
DS3-S8/10N-A24-50K1	NG-6	24 VAC	50	350	282,70
DS3-S8/10N-A48-50K1	NG-6	48 VAC	50	350	312,99
DS3-S8/10N-D12K1	NG-6	12 VDC	50	350	282,70
DS3-S8/10N-D24K1	NG-6	24 VDC	50	350	282,70
DS3-S8/10N-D48K1	NG-6	48 VDC	50	350	312,99

Electroválvula NG6 - corredera TA



NG6 Solenoid valve - spool TA

Electro-distributeurs NG6 - tiroir TA

Elettrovalvola NG6 - cursore TA



Referencia Part n°	TAMAÑO SIZE	VOLTAJE (V) VOLTAGE (V)	CAUDAL MÁX. (l/min) MAX. FLOW (l/min)	PRESIÓN MÁX. (bar) MAX. PRESSURE (bar)	€
DS3-TA/10N-A110-50K1	NG-6	110 VAC	60	350	182,86
DS3-TA/10N-A230-50K1	NG-6	230 VAC	60	350	182,86
DS3-TA/10N-A24-50K1	NG-6	24 VAC	60	350	182,86
DS3-TA/10N-A48-50K1	NG-6	48 VAC	60	350	197,44
DS3-TA/10N-D12K1	NG-6	12 VDC	60	350	182,86
DS3-TA/10N-D24K1	NG-6	24 VDC	60	350	182,86
DS3-TA/10N-D48K1	NG-6	48 VDC	60	350	197,40

Electroválvula NG6 - corredera SA2



NG6 Solenoid valve - spool SA2

Electro-distributeurs NG6 - tiroir SA2

Elettrovalvola NG6 - cursore SA2



Referencia Part n°	TAMAÑO SIZE	VOLTAJE (V) VOLTAGE (V)	CAUDAL MÁX. (l/min) MAX. FLOW (l/min)	PRESIÓN MÁX. (bar) MAX. PRESSURE (bar)	€
DS3-SA2/10N-A110-50K1	NG-6	110 VAC	60	350	182,86
DS3-SA2/10N-A230-50K1	NG-6	230 VAC	60	350	183,38
DS3-SA2/10N-A24-50K1	NG-6	24 VAC	60	350	182,86
DS3-SA2/10N-A48-50K1	NG-6	48 VAC	60	350	182,86
DS3-SA2/10N-D12K1	NG-6	12 VDC	60	350	182,86
DS3-SA2/10N-D24K1	NG-6	24 VDC	60	350	182,86
DS3-SA2/10N-D48K1	NG-6	48 VDC	60	350	197,44

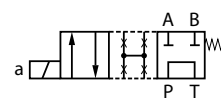
Electroválvula NG6 - corredera SA4



NG6 Solenoid valve - spool SA4

Electro-distributeurs NG6 - tiroir SA4

Elettrovalvola NG6 - cursore SA4



Referencia Part n°	TAMAÑO SIZE	VOLTAJE (V) VOLTAGE (V)	CAUDAL MÁX. (l/min) MAX. FLOW (l/min)	PRESIÓN MÁX. (bar) MAX. PRESSURE (bar)	€
DS3-SA4/10N-A230K1	NG-6	230 VAC	40	350	210,90
DS3-SA4/10N-D24K1	NG-6	24 VDC	40	350	210,90

ELECTROVÁLVULAS

Solenoid valve
Électrovalve
Elettrovalvole

Electroválvula NG6 - corredera TB23



NG6 Solenoid valve - spool TB23
Electro-distributeurs NG6 - tiroir TB23
Elettrovalvola NG6 - cursore TB23

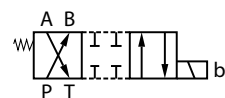


Referencia Part n°	TAMAÑO SIZE	VOLTAJE (V) VOLTAGE (V)	CAUDAL MÁX. (l/min) MAX. FLOW (l/min)	PRESIÓN MÁX. (bar) MAX. PRESSURE (bar)	€
DS3-TB23/10N-A110-50K1	NG-6	110 VAC	60	350	191,83
DS3-TB23/10N-A230-50K1	NG-6	230 VAC	60	350	191,83
DS3-TB23/10N-A24-50K1	NG-6	24 VAC	60	350	191,83
DS3-TB23/10N-A48-50K1	NG-6	48 VAC	60	350	206,42
DS3-TB23/10N-D12K1	NG-6	12 VDC	60	350	191,83
DS3-TB23/10N-D24K1	NG-6	24 VDC	60	350	191,83
DS3-TB23/10N-D48K1	NG-6	48 VDC	60	350	226,05

Electroválvula NG6 - corredera TB



NG6 Solenoid valve - spool TB
Electro-distributeurs NG6 - tiroir TB
Elettrovalvola NG6 - cursore TB

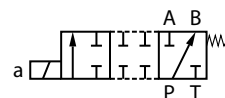


Referencia Part n°	TAMAÑO SIZE	VOLTAJE (V) VOLTAGE (V)	CAUDAL MÁX. (l/min) MAX. FLOW (l/min)	PRESIÓN MÁX. (bar) MAX. PRESSURE (bar)	€
DS3-TB/10N-A110-50K1	NG-6	110 VAC	60	350	182,86
DS3-TB/10N-A230-50K1	NG-6	230 VAC	60	350	190,45
DS3-TB/10N-A24-50K1	NG-6	24 VAC	60	350	182,86
DS3-TB/10N-A48-50K1	NG-6	48 VAC	60	350	197,44
DS3-TB/10N-D12K1	NG-6	12 VDC	60	350	182,86
DS3-TB/10N-D24K1	NG-6	24 VDC	60	350	182,86
DS3-TB/10N-D48K1	NG-6	48 VDC	60	350	197,44

Electroválvula NG6 - corredera TA23



NG6 Solenoid valve- spool TA23
Electro-distributeurs NG6 - tiroir TA23
Elettrovalvola NG6 - cursore TA23

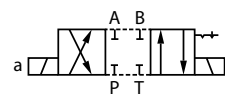


Referencia Part n°	TAMAÑO SIZE	VOLTAJE (V) VOLTAGE (V)	CAUDAL MÁX. (l/min) MAX. FLOW (l/min)	PRESIÓN MÁX. (bar) MAX. PRESSURE (bar)	€
DS3-TA23/10N-A110-50K1	NG-6	110 VAC	60	350	191,83
DS3-TA23/10N-A230-50K1	NG-6	230 VAC	60	350	191,83
DS3-TA23/10N-A24-50K1	NG-6	24 VAC	60	350	191,83
DS3-TA23/10N-A48-50K1	NG-6	48 VAC	60	350	206,42
DS3-TA23/10N-D12K1	NG-6	12 VDC	60	350	191,83
DS3-TA23/10N-D24K1	NG-6	24 VDC	60	350	191,83
DS3-TA23/10N-D48K1	NG-6	48 VDC	60	350	226,05

Electroválvula NG6 - corredera RK



NG6 Solenoid valve - spool RK
Electro-distributeurs NG6 - tiroir RK
Elettrovalvola NG6 - cursore RK



Referencia Part n°	TAMAÑO SIZE	VOLTAJE (V) VOLTAGE (V)	CAUDAL MÁX. (l/min) MAX. FLOW (l/min)	PRESIÓN MÁX. (bar) MAX. PRESSURE (bar)	€
DS3-RK/10N-A230-50K1	NG-6	220 VAC	60	350	282,70
DS3-RK/10N-D24K1	NG-6	24 VDC	60	350	282,70

ELECTROVÁLVULAS

Solenoid valve

Électrovalve

Elettrovalvole

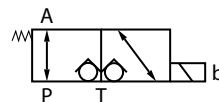
Válvula de retención - corredera 3A



Poppet solenoid valve - spool 3A

Valve de retention - tiroir 3A

Valvola di ritegno - cursore 3A



Referencia Part n°	TAMAÑO SIZE	VOLTAJE (V) VOLTAGE (V)	CAUDAL MÁX. (l/min) MAX. FLOW (l/min)	PRESIÓN MÁX. (bar) MAX. PRESSURE (bar)	€
DT03-3A/10-110RAC	NG-6	110 RAC	25	250	738,43
DT03-3A/10-12VCC	NG-6	12 VCC	25	250	730,51
DT03-3A/10-220RAC	NG-6	220 RAC	25	250	738,43
DT03-3A/10-24VCC	NG-6	24 VCC	25	250	730,51

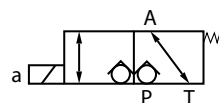
Válvula de retención - corredera 3C



Poppet solenoid valve - spool 3C

Valve de retention - tiroir 3C

Valvola di ritegno - cursore 3C



Referencia Part n°	TAMAÑO SIZE	VOLTAJE (V) VOLTAGE (V)	CAUDAL MÁX. (l/min) MAX. FLOW (l/min)	PRESIÓN MÁX. (bar) MAX. PRESSURE (bar)	€
DT03-3C/10-110RAC	NG-6	110 RAC	25	250	738,43
DT03-3C/10-12VCC	NG-6	12 VCC	25	250	730,51
DT03-3C/10-220RAC	NG-6	220 RAC	25	250	738,43
DT03-3C/10-24VCC	NG-6	24 VCC	25	250	730,51

Bobinas corriente continua para DS3



DS3 coils (direct current)

Bobines courant continu pour DS3

Bobine corrente continua per DS3

Referencia Part n°	VOLTAJE (V) VOLTAGE (V)	POTENCIA (W) POWER (W)	ELECTROVÁLVULA DIRECT. VALVE	€
C22-D12K1/10	12 VDC	32,7	DS3	38,70
C22-D24K1/10	24 VDC	31	DS3	38,70
C22-D48K1/10	48 VDC	29,5	DS3	53,29

Bobinas corriente alterna para DS3



DS3 coils (alternative current)

Bobines courant alternatif pour DS3

Bobine corrente alternata per DS3

Referencia Part n°	VOLTAJE (V) VOLTAGE (V)	ELECTROVÁLVULA DIRECT. VALVE	€
C20.6-A110-50K1/10	110 VAC	DS3	38,83
C20.6-A230-50K1/10	230 VAC	DS3	38,83
C20.6-A24-50K1/10	24 VAC	DS3	38,83
C20.6-A48-50K1/10	48 VAC	DS3	53,29

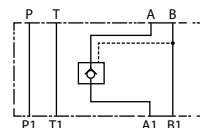
ELECTROVÁLVULAS

Solenoid valve
Électrovalve
Elettrovalvole

Válvula antirretorno simple pilotaje interno NG6 -A



Pilot operated single check valve NG6 -A
Clapet anti-retour simple pilotage interne NG6 -A
Valvola di blocco pilotaggio semplice interno NG6-A

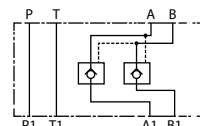


Referencia Part n°	Tamaño Size	PRESIÓN MAX. (bar) MAX. PRESSURE (bar)	TOMASA-B OIL PORTS A-B	€
MVPP-SA/50	NG-6	350	A	171,22

Válvula antirretorno doble pilotaje interno NG6



Pilot operated double check valve NG6
Clapet anti-retour double pilotage interne NG6
Valvola di blocco pilotaggio doppio interno NG6-A

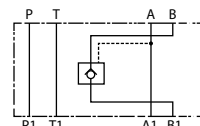


Referencia Part n°	TAMAÑO SIZE	PRESIÓN MAX. (bar) MAX. PRESSURE (bar)	TOMAS A-B OIL PORTS A-B	€
MVPP-D/50	NG-6	350	A - B	182,40

Válvula antirretorno simple pilotaje interno NG6 -B



Pilot operated single check valve NG6 -B
Clapet anti-retour simple pilotage interne NG6 -B
Valvola di blocco pilotaggio semplice interno NG6-B

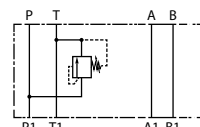


Referencia Part n°	TAMAÑO SIZE	PRESIÓN MAX. (bar) MAX. PRESSURE (bar)	TOMAS A-B OIL PORTS A-B	€
MVPP-SB/50	NG-6	350	B	171,22

Limitadora en P - descarga en T



Relief valve in P - discharge in T
Limiteur pression sur P - décharge sur T
Valvola limitatrice di pressione in P - con scarico in T

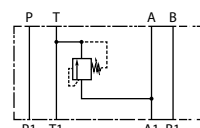


Referencia Part n°	TAMAÑO SIZE	PRESIÓN MAX. (bar) MAX. PRESSURE (bar)	CAMPO REG. (bar) REG. RATE (bar)	€
MCD3-SP/51N	NG-6	350	0 - 70	222,87
MCD4-SP/51N	NG-6	350	0 - 140	222,87
MCD5-SP/51N	NG-6	350	0 - 210	262,27
MCD6-SP/51N	NG-6	350	0 - 350	222,87

Limitadora simple en A - descarga en T



Relief valve in A - discharge in T
Limiteur pression sur A - décharge sur T
Valvola limitatrice di pressione semplice in A - con scarico in T

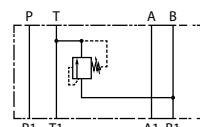


Referencia Part n°	TAMAÑO SIZE	PRESIÓN MAX. (bar) MAX. PRESSURE (bar)	CAMPO REG. (bar) REG. RATE (bar)	€
MCD3-SAT/51N	NG-6	350	0 - 70	222,87
MCD3-SAT/51N/K	NG-6	350	0 - 70	240,21
MCD4-SAT/51N	NG-6	350	0 - 140	222,87
MCD5-SAT/51N	NG-6	350	0 - 210	222,87
MCD6-SAT/51N	NG-6	350	0 - 350	222,87

Limitadora simple en B - descarga en T



Relief valve in B - discharge in T
Limiteur pression sur B - décharge sur T
Valvola limitatrice di pressione semplice in B - con scarico in T



Referencia Part n°	TAMAÑO SIZE	PRESIÓN MAX. (bar) MAX. PRESSURE (bar)	CAMPO REG. (bar) REG. RATE (bar)	€
MCD3-SBT/51N	NG-6	350	0 - 70	222,87
MCD4-SBT/51N	NG-6	350	0 - 140	222,87
MCD5-SBT/51N	NG-6	350	0 - 210	222,87
MCD6-SBT/51N	NG-6	350	0 - 350	222,87

ELECTROVÁLVULAS

Solenoid valve

Électrovalve

Elettrovalvole

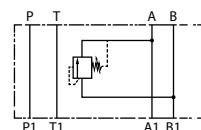
Limitadora simple en B - descarga en A



Relief valve in B - discharge in A

Limiteur pression sur B - décharge sur A

Valvola limitatrice di pressione semplice in B - con scarico in A



Referencia Part n°	TAMAÑO SIZE	PRESIÓN MAX. (bar) MAX. PRESSURE (bar)	CAMPO REG. (bar) REG. RATE (bar)	€
MCD3-SB/51N	NG-6	350	0 - 70	267,74
MCD4-SB/51N	NG-6	350	0 - 140	267,74
MCD5-SB/51N	NG-6	350	0 - 210	267,74
MCD6-SB/51N	NG-6	350	0 - 350	267,74

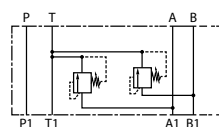
Limitadora doble en A y B - descarga en T



Double relief valve in A and B - discharge in T

Limiteur double sur A et B - décharge sur T

Valvola limitatrice di pressione doppia sulle vie A-B con scarico in T



Referencia Part n°	TAMAÑO SIZE	PRESIÓN MAX. (bar) MAX. PRESSURE (bar)	CAMPO REG. (bar) REG. RATE (bar)	€
MCD3-DT/51N	NG-6	350	0 - 70	339,54
MCD4-DT/51N	NG-6	350	0 - 140	339,54
MCD5-DT/51N	NG-6	350	0 - 210	339,54
MCD6-DT/51N	NG-6	350	0 - 350	339,54

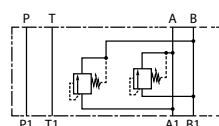
Limitadora doble en A y B - descarga cruzada



Double relief valve in A and B - crossed discharge

Limiteur double sur A et B - décharges croisées

Valvola limitatrice di pressione doppia sulle vie A-B con scarichi incrociati



Referencia Part n°	TAMAÑO SIZE	PRESIÓN MAX. (bar) MAX. PRESSURE (bar)	CAMPO REG. (bar) REG. RATE (bar)	€
MCD3-D/51N	NG-6	350	0 - 70	347,02
MCD4-D/51N	NG-6	350	0 - 140	347,02
MCD5-D/51N	NG-6	350	0 - 210	347,02
MCD6-D/51N	NG-6	350	0 - 350	346,62

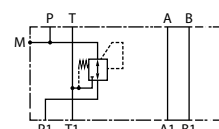
Reductora de presión en P



Pressure reducing valve in P

Réducteur de pression sur P

Riduttrice di pressione in P



Referencia Part n°	TAMAÑO SIZE	PRESIÓN MAX. (bar) MAX. PRESSURE (bar)	CAMPO REG. (bar) REG. RATE (bar)	€
MZD2/50	NG-6	350	3 - 35	262,38
MZD3/50	NG-6	350	10 - 70	262,95
MZD4/50	NG-6	350	30 - 140	262,95
MZD5/50	NG-6	350	60 - 280	262,95

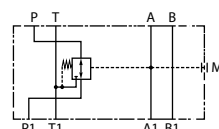
Reductora de presión en A



Pressure reducing valve in A

Réducteur de pression sur A

Riduttrice di pressione in A



Referencia Part n°	TAMAÑO SIZE	PRESIÓN MAX. (bar) MAX. PRESSURE (bar)	CAMPO REG. (bar) REG. RATE (bar)	€
MZD2/A/50	NG-6	350	3 - 35	278,39
MZD3/A/50	NG-6	350	10 - 70	278,39
MZD4/A/50	NG-6	350	30 - 140	278,39
MZD5/A/50	NG-6	350	60 - 280	278,39

ELECTROVÁLVULAS

Solenoid valve

Électrovalve

Elettrovalvole

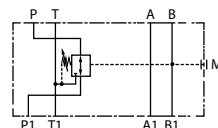
Reductora de presión en B



Pressure reducing valve in B

Réducteur de pression sur B

Riduttrice di pressione in B



Referencia Part n°	TAMAÑO SIZE	PRESIÓN MAX. (bar) MAX. PRESSURE (bar)	CAMPO REG. (bar) REG. RATE (bar)	€
MZD2/B/50	NG-6	350	3 - 35	278,39
MZD3/B/50	NG-6	350	10 - 70	278,39
MZD4/B/50	NG-6	350	30 - 140	278,39
MZD5/B/50	NG-6	350	60 - 280	278,39

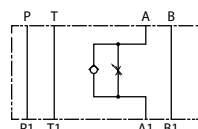
Válvula reguladora de caudal simple unidirec. NG6 -toma A - salida



Unidirectional flow restrictor valve in A line NG-6

Étrangleur de débit unidirectionnel sur ligne A, NG-6

Valvola regolatrice di portata semplice unidirezionale NG 6 - presa A - uscita



Referencia Part n°	TAMAÑO SIZE	SENTIDO DIRECTION	TOMAS A-B OIL PORTS A-B	€
MERS-SA/50	NG-6	Salida / Exit	A	213,20

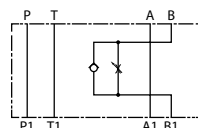
Válvula reguladora de caudal simple unidirec. NG6 -toma B - salida



Unidirectional flow restrictor valve in B line NG-6

Étrangleur de débit unidirectionnel sur ligne B, NG6

Valvola regolatrice di portata semplice unidirezionale NG 6 - presa B - uscita



Referencia Part n°	TAMAÑO SIZE	SENTIDO DIRECTION	TOMAS A-B OIL PORTS A-B	€
MERS-SB/50	NG-6	Salida / Exit	B	180,62

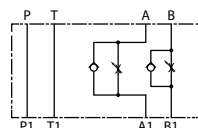
Válvula reguladora de caudal doble unidirec. NG6 - salida



Unidirectional flow restrictor valve in A & B lines NG-6 retour

Étrangleur de débit unidirectionnel sur lignes A et B, NG-6 descente

Valvola regolatrice di portata doppia unidirezionale NG 6 - uscita



Referencia Part n°	TAMAÑO SIZE	SENTIDO DIRECTION	TOMAS A-B OIL PORTS A-B	€
MERS-D/50	NG-6	Salida / Exit	A - B	200,11

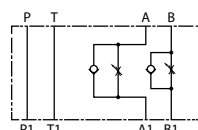
Válvula reguladora de caudal doble unidirec. NG6 - entrada



Unidirectional flow restrictor valve in A & B lines NG-6 forward

Étrangleur de débit unidirectionnel sur lignes A et B, NG-6 monté

Valvola regolatrice di portata doppia unidirezionale NG 6 - entrata



Referencia Part n°	TAMAÑO SIZE	SENTIDO DIRECTION	TOMAS A-B OIL PORTS A-B	€
MERS-RD/50	NG-6	Entrada / Entry	A - B	224,01

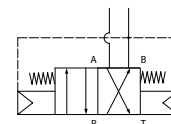
Válvula inversora NG6



NG6 self-reversing valve

Valve à inversion automatique NG6

Valvola ad inversione automatica NG 6



Referencia Part n°	Presión Mín (bar) Min. Press. (bar)	Pres. max. (bar) Max. Press. (bar)	Caudal mín. (l/min) Min. flow (l/min)	CAUDAL MAX (l/min) FLOW MAX (l/min)	€
DSB3-RTA/10N	50	350	3	30	351,52

ELECTROVÁLVULAS

Solenoid valve
Électrovalve
Elettrovalvole



Placas base NG6 para 1 electroválvula, tomas laterales - sin limitadora

Subplates for a directional valve NG6- side ports- without relief valve

Embases NG6 pour 1electro. orifices laterales- sans limiteur

Piastre di base NG6 per 1 elettrov., presa laterale, senza limitatrice

Referencia Part n°	ROSCA THREAD	TAMAÑO SIZE	PRESIÓN MAX. (bar) MAX. PRESSURE (bar)	TOMAS A-B OIL PORTS A-B	€
PBKV-6-38TL	3/8" BSP	NG-6	350	Laterales/Side	66,94



Placas base NG6 para 1 electroválvula, tomas verticales - sin limitadora

Subplates for a directional valve NG6-vertical ports- without relief valve

Embases NG6 pour 1electro. orifices verticales- sans limiteur

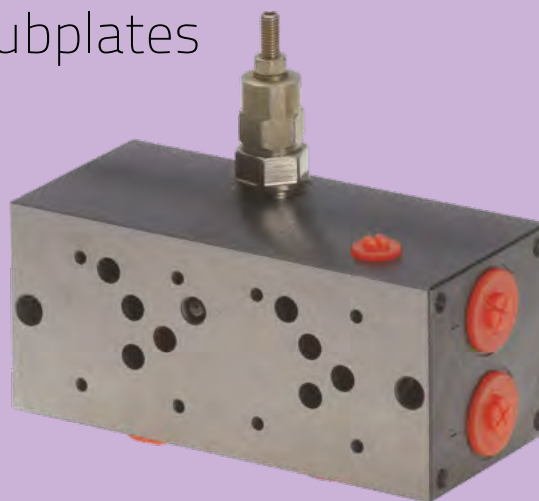
Piastre di base NG6 per 1 elettrov., presa verticale, senza limitatrice

Referencia Part n°	ROSCA THREAD	TAMAÑO SIZE	PRESIÓN MAX. (bar) MAX. PRESSURE (bar)	TOMAS A-B OIL PORTS A-B	€
PBKV-6-38TV	3/8" BSP	NG-6	350	Vertical	59,20

TrAle®

PLACAS BASE SUBPLATES

Descubre nuestra amplia variedad de placas base
Discover our wide range of Subplates



NG6: pag 49-50
NG10: pag. 56- 57